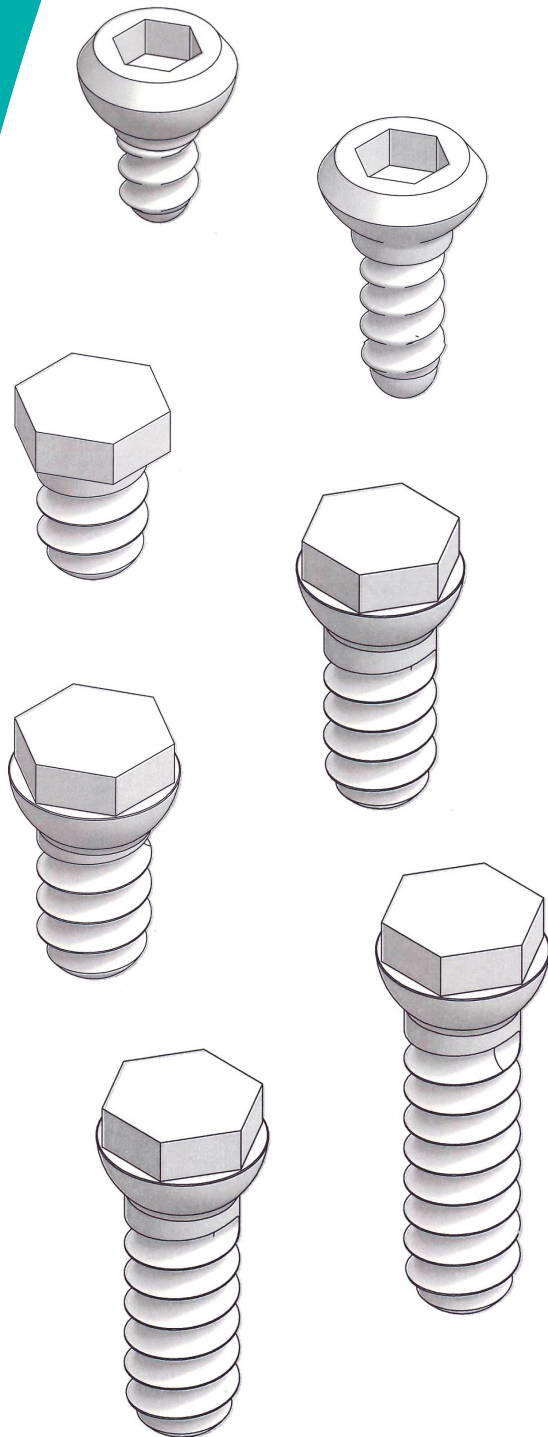


Thomas Ceramic Screws



Product Features

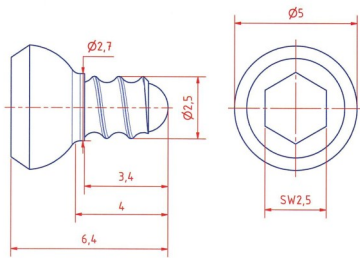
- MRI-compatible screws
- Material: ceramic
- Two different screw types
- SI screws
- SA screws
- Tools for the screws available

 Made in Germany

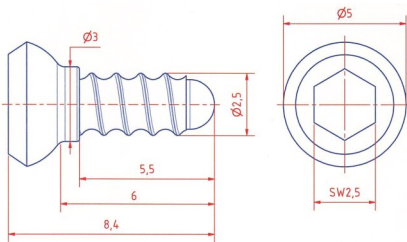
Certified
ISO 9001



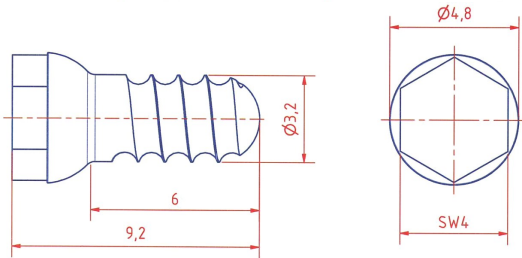
TÜVRheinland®
Precisely Right.



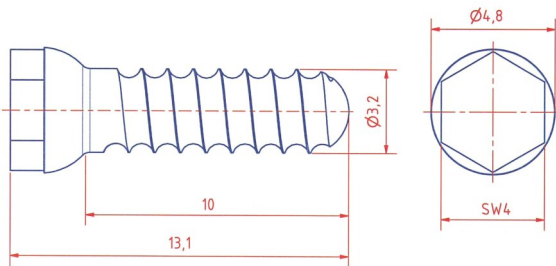
SI04 Article number: **AN000053**



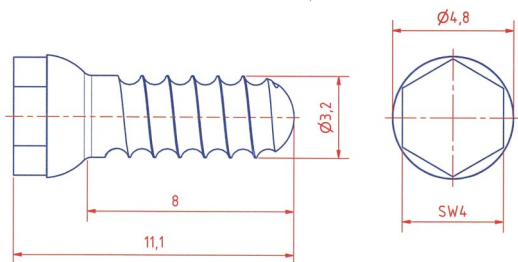
SI06 Article number: **AN000054**



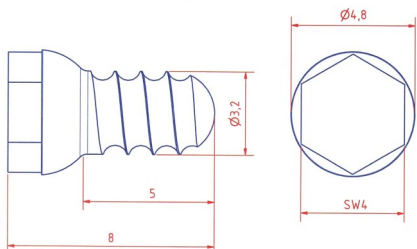
SA06 Article number: **AN000057**



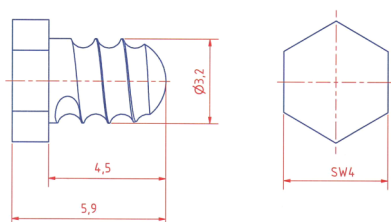
SA10 Article number: **AN000059**



SA08 Article number: **AN000058**



SA05 Article number: **AN000056**



SA45 Article number: **AN000055**