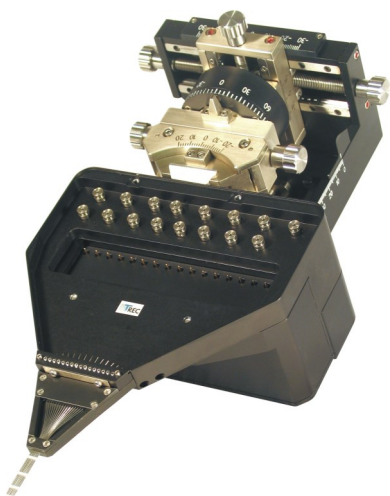


Thomas RECORDING GmbH

Thomas RECORDING offers a broad range of equipment for primate research, like microelectrodes, multi-electrode micro-drives, amplifiers/filters, stereotaxic instruments, data acquisition systems, etc. For example we offer a 112 channel (16 heptode) recording system that places 112 recording contacts on an area of 2x2mm. We have 30 years of experience in providing equipment for primate research labs or with the integration of components of our portfolio in existing primate research laboratories. Please do not hesitate to contact us if you have any questions!

info@ThomasRECORDING.com



Techniques for primate research



THOMAS RECORDING GMBH

Winchester Strasse 8
35394 Giessen
GERMANY

Telefon: ++49-641-94414-0
Fax: ++49-641-94414-14
E-Mail: info@ThomasRECORDING.com
Internet: www.ThomasRECORDING.com



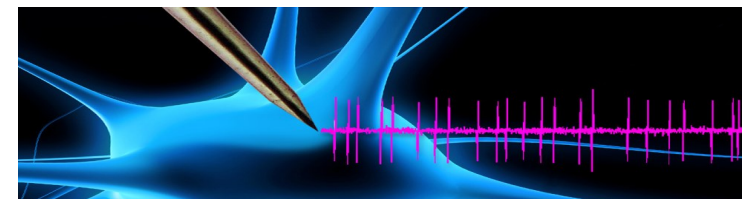
**THOMAS RECORDING
DO BRASIL**

WWW.THOMASRECORDINGDOBRASIL.COM.BR

THOMAS RECORDING GMBH



Primate Research Equipment



WWW.THOMASRECORDING.COM

CHRONIC PRIMATE RECORDING SYSTEMS



Chamber insert (left picture) with 4x4 electrode array with integrated headstage. Electrodes are moveable in both directions.

Xyz-Manipulator (robot system) allows electrode movement in the chamber insert in both directions (up and down). This device is software controlled. Positioning accuracy 1µm for each axis.

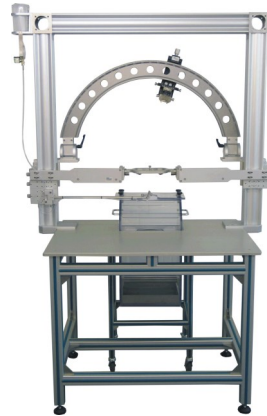


EYE TRACKING SYSTEMS



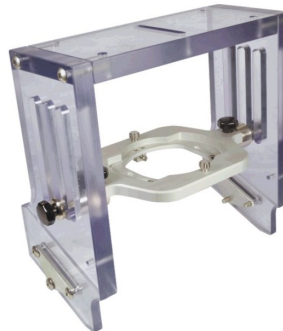
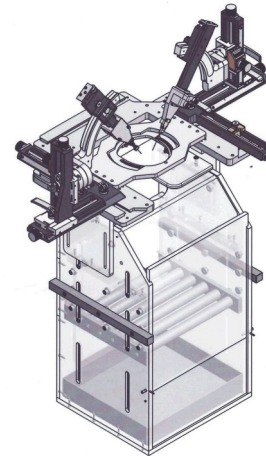
Eye Tracking Systems with frame rates from 230 up to 1250Hz. These systems are intended to be used with head fixed primates.

PRIMATE STEREOTAXY



Precision Positioning System (PPS): complete primate stereotaxic instrument with table, frame, curved guided rail, primate chair with trolley, 3 point head holder, reward unit and xyz manipulator for microdrive mounting.

The **Primate Chair Stereotaxic System** with two microdrives mounted on the stereotaxic unit. This unit is a custom made design that can be adapted to other customers requirements.



Thomas 3 Point Head Holder for mounting on primate chairs. We have adapted our unique head holding system for use with all primate chairs presently used in neurophysiology.

MICRODRIVES & ELECTRODES



The **Motorized Electrode Manipulator (MEM)** is available in a 10mm and 40mm electrode travel distance version. The system is small and lightweight and usually mounted directly on a primate chamber. It drives electrodes from all electrode manufacturers.

The **Mini Matrix** is available for up to 5 electrodes or tetrodes. The drive has an integrated preamplifier and is mounted on a primate chamber.



The **Eckhorn Matrix** is available in a 7, 16 motor version for up to 112 signal channels. This drive is mounted to a stereotaxic instrument. The max. electrode travel is 40mm.