



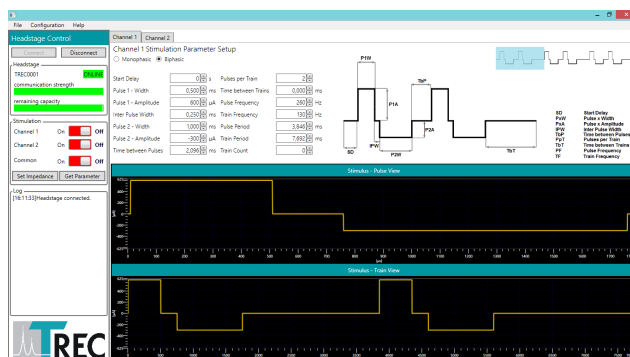
Thomas RECORDING GmbH

„We have the solution!“

## Thomas Dual Stimulator (TDS)

### Product Features

- Two independent stimulation channels (software controlled)
- True wireless system
- Updates wireless stimulator headstage programming in real time
- Up to  $\pm 625\mu\text{A}$  output current (depending on electrode impedance)
- Implantable stimulation electrodes available (customized electrodes)
- Headstage weight 3.9g (without battery)
- External rechargeable battery
- Integrated power supply
- Dual channel constant current source for stimulation
- Small size and low weight
- Integrated software package



 Made in  
GERMANY

[www.ThomasRECORDING.com](http://www.ThomasRECORDING.com)

# Innovative Products for Neurophysiology



Figure 1: Thomas Dual Stimulator (TDS) without plastic cabinet and accumulator

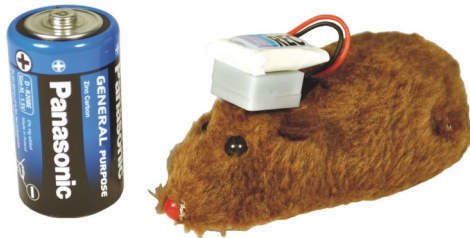


Figure 2: Thomas Dual Stimulator (TDS) size comparison with a standard D type battery

The **Thomas Dual Stimulator (TDS)** is a portable dual channel telemetric stimulator system which can be used for extracellular neural stimulation in freely behaving small animals (e.g. rats, guinea pigs). The **Thomas Dual Stimulator** includes everything for freely stimulation applications: dual channel constant –current stimulator for application of biphasic current pulses, software programmable microstimulator, everything housed in a small plastic cabinet, mounted on an implantable connector system. Implantable stimulation microelectrodes including all accessories are also available for this system.

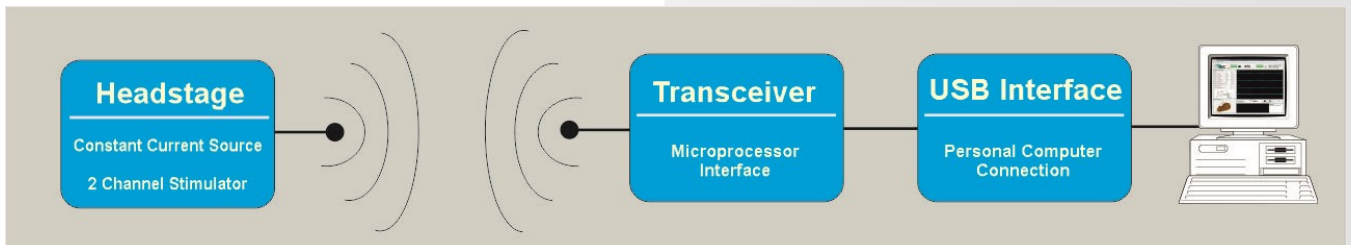


Figure 3: Block diagram of the Thomas Dual Stimulator System (TDS)

The **Thomas Dual Stimulator (TDS)** consists of a dual channel stimulation. The **Thomas Thomas Dual Stimulator (TDS)** has a total weight of 3,9g (including multipin connector) and a size of (10x21x23)mm including plastic housing and without accumulator.

The standard accumulator has a capacity of 240mAh, dimension of (27x20x6)mm and a weight of 7,2g.

**Thomas Dual Stimulator (TDS)**, is controlled by a software running under Windows operating system (see figure 4).



Figure 4: Computer software of the Thomas Dual Stimulator (TDS)

Ordering information: **AN001015**