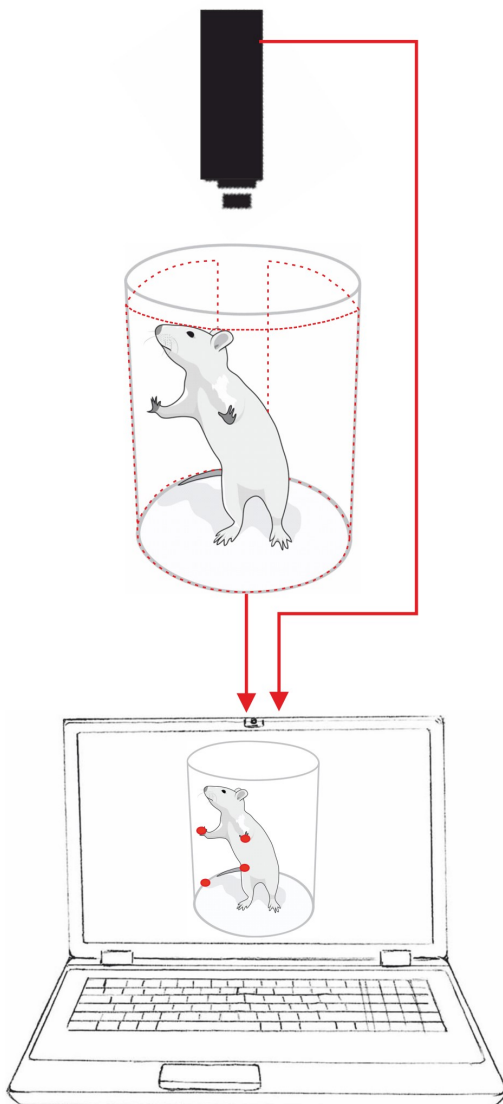
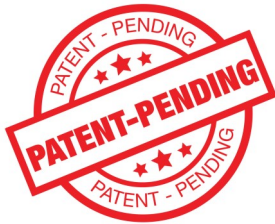




Thomas RECORDING GmbH

„We have the solution!“

Thomas Cylinder Test System



Product Features

- Automatic Schallert Cylinder Test
- Simultaneous tracking of up to 10 surface interactions
- High spatial resolution: 300µm
- High temporal resolution: 200Hz
- Cylinder D=200mm, H=450mm (Size customizable!)
- Including Video Camera
- Fully automated Data Acquisition Software (incl.)
- Integrated & portable System
- Easy operation & handling
- Easy cleaning and maintenance
- Fulfills electrical safety requirements
- Easy customization

 Made in
GERMANY

www.ThomasRECORDING.com

Innovative Products for Neurophysiology

The Thomas cylinder test system is a new fully integrated device for the automatic measurement and fast analysis of the “Schallert cylinder test”, typically used for investigating the exploratory and motor behavior of rodents or marmoset monkeys. Due to its highly sensitive surface, it will recognize and store every interaction of the animal (e.g. rearing, vertical progression, nose pokes, etc.) automatically on the connected PC. A time synchronized observation video will allow for a combination of these quantitative data with the qualitative behavior at any time. Data of all contact events with the cylinder barrel will be stored in an easily accessible xml-file for further analysis with all commonly used data evaluation software (e.g. MATLAB, R, etc.).

This system will highly increase the quality of the experimental data and the speed for analyzing them, since experimenters are not required to perform a qualitative frame-by-frame analysis of the video recorded. Furthermore, the all-in-one solution will allow for a quick setup and high reproducibility between measurements.

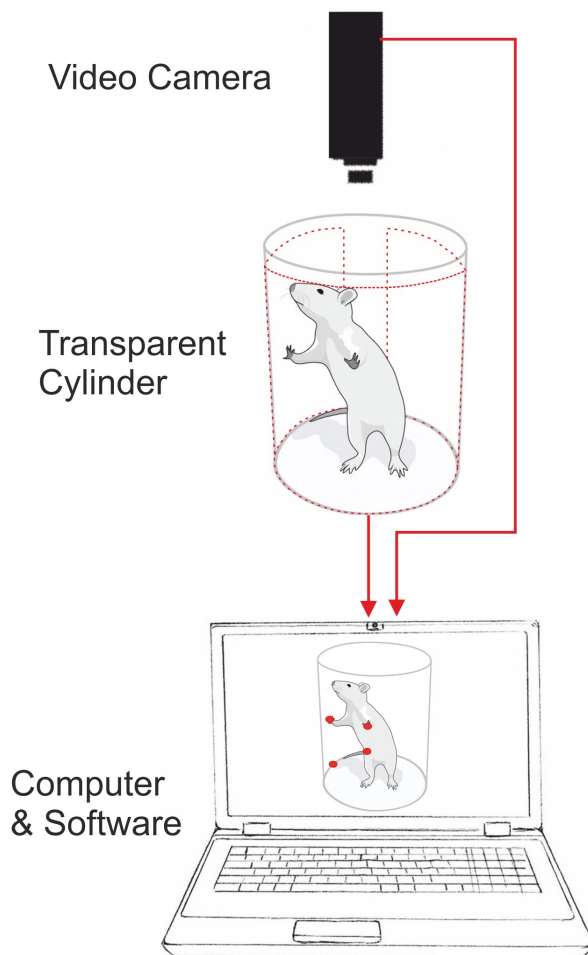


Figure 1: Thomas Cylinder Test Components

Ordering information:

Thomas Cylinder Test Data Acquisition

Article number: **AN001425**

For detailed information please visit our website:

www.ThomasRECORDING.com